

**LUMI**  
recoveryMAX  
COLD WATER THERAPY

USER MANUAL



MODEL - V2

MAX  
|↔|

420  
LT

A woman with long dark hair is sitting in a hot tub, eyes closed, with her hands resting on her lap. She is wearing a black sports bra. The background shows a brick house and some greenery. The image has a soft, slightly blurred aesthetic.

TRUST THE PROCESS

We always end up  
right where we are  
supposed to be,  
right when we are  
meant to be there.

Sometimes we just  
need a little time  
to recover.

#lumitherapy

Follow this QR Code for our  
product guides and videos  
YOUR JOURNEY BEGINS!



## TAKE A MOMENT TO FIND OUT WHAT'S INCLUDED

- 1 x LUMI Recovery MAX™ Ice Bath
- 6 x Durable Support Legs
- 1 x Inflatable LUMI Thermo UFO™ Lid
- 1 x LUMI All Weather Cover™

## UNPACKING YOUR LUMI RECOVERY MAX

1. Find a suitable area and flat solid surface to unpack and set up.
2. Complete the steps in the QUICK START GUIDE to assemble the LUMI Recovery MAX™.
3. Read carefully through this user manual before using the LUMI Recovery MAX™.

### CUSTOMER SUPPORT

If you have any questions about setting up or using your LUMI product, please visit our website for further information, faqs, troubleshooting and customer support.

# QUICK START GUIDE

## ASSEMBLE THE RECOVERY POD MAX

1. Insert the 6x support legs into the 6x holes around the base of the LUMI Recovery MAX™.
2. Ensure the feet are at the bottom and fully supported on a stable flat surface.
3. Inflate the LUMI Recovery MAX™ 'Top Ring' & LUMI Thermo UFO™ lid - do not over inflate.
4. Once inflated, seal the valve using the safety cap.
5. Once the pod is assembled, you can begin to fill with cold water until roughly 15cm (6 inches) below the underside of the top ring.
6. To empty your LUMI Recovery MAX™, unscrew the drain cap to empty the water into a nearby sink or drain.





#### ALL WEATHER COVER

The weather cover is designed as an extra layer to help keep rainwater, dust, and debris out of the Recovery MAX.

#### THERMO UFO LID

This inflatable lid is designed to add a thermal bridge between the ice bath and the external elements, keeping the water at a steady temperature.

#### INFLATABLE 'TOP RING'

The inflatable top ring is perfect for adding a comfortable support when sat in the Recovery MAX.

#### PORTABLE

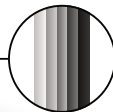
The compact, lightweight design makes the Recovery Pod easy to use anywhere.

#### REMOVABLE LEGS

The Recovery MAX has 6 removable support legs, making for quick assembly / disassembly.

#### EASY CLEAN

The Recovery MAX is lined with an easy to clean, UV resistant skin-friendly PVC inner lining.



5 x layers of thermal insulated TPE protection

**LUMI**  
recoveryMAX

**MAX**  
I ↔ I

**420**  
LT

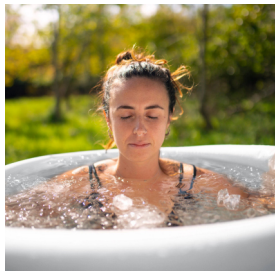
## USAGE & SAFETY NOTES

### MAINTENANCE, CLEANING & STORAGE

- Before using your LUMI Recovery MAX™ for the first time, please wash with warm soapy water, rinse and wipe down with a clean dry cloth.
- Never clean your LUMI Recovery MAX™ with strong bleach-based detergents, as this may degrade the materials and waterproof seals.
- We recommend draining, cleaning and drying your LUMI Recovery MAX™ every two to three weeks.

### WHEN FILLING WITH WATER

- Your LUMI Recovery MAX™ can be filled with cold or hot water, up to a maximum temperature of 50°C. Always start filling with room temperature water first, adjusting to your desired temperature as the LUMI Recovery MAX™ gets closer to full.
- Never fill your LUMI Recovery MAX™ to more than  $\frac{3}{4}$  full so to compensate for your body mass and displacement of water when you enter. It's always best to start  $\frac{1}{2}$  full and then adjust afterwards.





**LUMI**  
recoveryMAX  
COLD WATER THERAPY

**LUMI**  
recoveryMAX  
COLD WATER THERAPY

# WARNINGS

## FOR YOUR SAFETY

**ALWAYS** consult your doctor before using an ice bath if you have any health issues!

**Children and vulnerable adults** must always be supervised when in the vicinity of a water-filled ice bath, and should never enter due to risk of drowning or getting health issues from cold water.

**DO NOT USE if you are** - Under 18 years of age, Pregnant, have history of heart disease or high blood pressure, have diabetes, complications such as neuropathy or retinal damage, you wear a pacemaker, history of frostbite, have an open wound, had recent surgery, epilepsy or any other health concerns or risks.

Using an ice bath dramatically decreases your body core temperature. Immersing yourself in cold water constricts blood vessels and slows the flow of blood around the body, which combined with health complications, can cause your blood pressure to rise and give you a higher chance of cardiac arrest or stroke. **Health benefits can only be obtained through careful use of an ice bath.**

## RECOMMENDATIONS

Despite the potential side effects and warnings, using an ice bath correctly actually has **many health benefits!** We will always recommend you begin by spending no more than a few minutes in the ice bath, and slowly working you way up to the recommended time, never push your body beyond its limits.



# PRODUCT SPECIFICATIONS

**LUMI**  
recovery**MAX**  
COLD WATER THERAPY



## DIMENSIONS

---

90cm diameter

---

---

75cm height

---

---

Suitable for heights up to 6'7" (2m tall)

---

## UNIT SPECS

---

420 litre capacity

---

---

5x Thermal insulated TPE layers

---

---

Rip-stop Polyester fabric strengthened layer

---

---

UV resistant skin-friendly PVC inner lining

---

## WARRANTY

---

Recovery MAX - 1 year limited warranty

---

---

Thermo UFO Lid - 1 month limited warranty

---

---

All Weather Cover - 1 month limited warranty

---

The Recovery MAX Body warranty covers any manufacturing defects or leakages 1 year from delivery date. Please see the LUMI website for full details.



Access our library of free personal training videos and guides on our website to learn how to get the most out of your LUMI product and achieve the results you want.

**THERE  
ARE NO  
LIMITS**



[lumitherapy.co.uk](https://lumitherapy.co.uk)



[@lumi.therapy](https://www.instagram.com/lumi.therapy)



[@Lumitherapyuk](https://www.facebook.com/Lumitherapyuk)