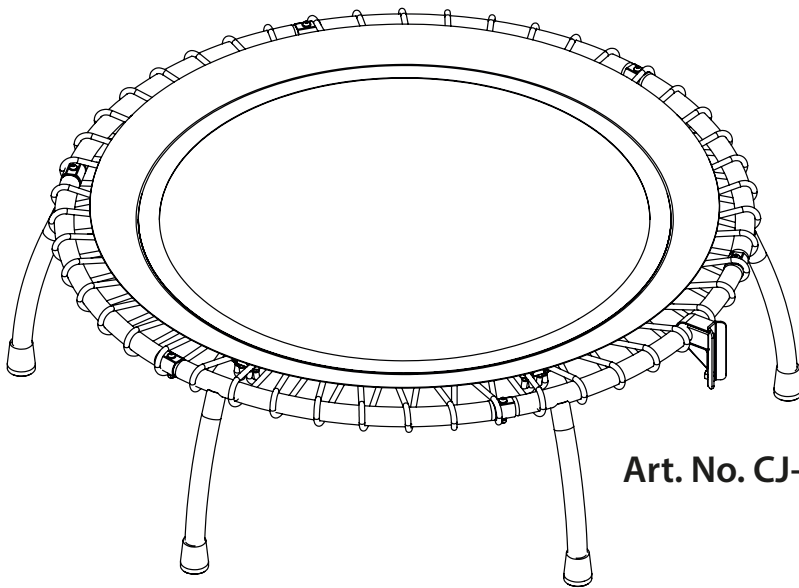
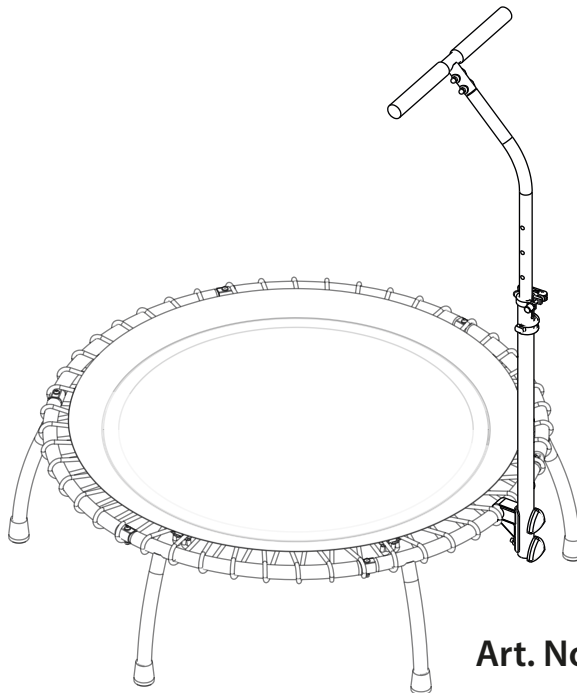




Assembly Instructions



Art. No. CJ-RBNDR-100/112/125



Art. No. CJ-FT-HB-B



max. 100 kg



~ 30 - 60 Min.

CJRBNDR100/112/125.01.02

Fitness Trampoline

Dear customer,

with a cardiojump trampoline you have made an excellent choice and we thank you for your trust and decision. With cardiojump we offer you high quality trampolines for indoor or garden use. Let your children play outside or do a very effective fitness training in your home, which is easy on the joints. Whatever you want to do, you can rely on your cardiojump trampoline! We wish you lots of fun!

Further information can be found at www.sport-tiedje.com

Intended Use

The equipment may only be used for its intended purpose.

The equipment is only suitable for home use. The equipment is not suitable for semi-professional (e.g. hospitals, associations, hotels, schools, etc.) and commercial or professional use (e.g. fitness studios).

Legal Notice

Sport-Tiedje GmbH
Europe's No. 1 for home fitness

International Headquarters
Flensburger Straße 55
24837 Schleswig
Germany

Management:
Christian Grau
Sebastian Campmann
Dr. Bernhard Schenkel
No. HRB 1000 SL
Local Court Flensburg
European VAT Number: DE813211547

Disclaimer

©2019 cardiojump® is a registered brand of the company SportTiedje GmbH. All rights reserved. Any use of this trademark without the explicit written permission of Sport-Tiedje is prohibited.

Product and manual are subject to change. Technical data can be changed without advance notice.

Content

1	GENERAL INFORMATION	6
1.1	Technical Data	6
1.2	Personal Safety	7
2.2	Set-Up Place	8
2	ASSEMBLY	8
2.1	General Instructions	8
2.3	Scope of Delivery - Trampoline	9
2.4	Assembly - Trampoline	10
2.5	Scope of Delivery - Handlebar	12
2.6	Assembly - Handlebar	13
3	STORAGE AND TRANSPORT	14
3.1	General Instructions	14
4	TROUBLESHOOTING, CARE AND MAINTENANCE	14
4.1	General Instructions	14
4.2	Faults and Fault Diagnosis	14
4.3	Maintenance and Inspection Calendar	15
5	DISPOSAL	15
6	RECOMMENDED ACCESSORIES	16
7	ORDERING SPARE PARTS	17
7.1	Serial Number and Model Name	17
7.2	Parts List - Trampoline	18
7.3	Exploded Drawing - Trampoline	18
7.5	Parts List - Handlebar	19
7.4	Exploded Drawing - Handlebar	19
8	WARRANTY	20
9	CONTACT	22

ABOUT THIS MANUAL

Please carefully read the entire manual before installation and first use. The manual will help you to quickly set up the system and explains how to safely use it. Make sure that all persons exercising with the equipment (especially children and persons with physical, sensory, mental or motor disabilities) are informed about this manual and its contents in advance. In case of doubt, responsible persons must supervise the use of the equipment.



This equipment has been manufactured according to the latest safety knowledge. As far as possible, potential safety hazards which could cause injury have been eliminated. Make sure to carefully follow the instructions and that all parts are securely in place. If required, read through the instructions again to correct any mistakes.

Please pay close attention to the safety and maintenance instructions given here. The contract partner cannot be held liable for damage to health, accidents or damage to the equipment when it is not used in accordance with these instructions.

The following safety instructions may appear in this manual:

► **ATTENTION**

This notice indicates potentially hazardous situations which, if not avoided, may result in property damage.

⚠ **CAUTION**

This notice indicates potentially hazardous situations which, if not avoided, may result in slight or minor injuries!

⚠ **WARNING**

This notice indicates potentially hazardous situations which, if not avoided, may result in death or serious injuries!

⚠ **DANGER**

This notice indicates potentially hazardous situations which, if not avoided, will result in death or serious injuries!

ⓘ **NOTICE**

This notice indicates further useful information.

Retain these instructions in a safe place for future reference, maintenance or when ordering replacement parts.

1.1 Technical Data

Dimensions and weight

100 cm

Article weight (gross, incl. packaging) approx.:	8.85 kg
Article weight (net, without packaging) approx.:	7.65 kg
Packaging dimensions (L x W x H) approx.:	65 cm x 42 cm x 16.5 cm
Diameter approx.:	125 cm
Height approx.:	34 cm

Maximum user weight: 100 kg

112 cm

Article weight (gross, incl. packaging) approx.:	9.33 kg
Article weight (net, without packaging) approx.:	7.93 kg
Packaging dimensions (L x W x H) approx.:	71 cm x 42 cm x 17.5 cm
Diameter approx.:	112 cm
Height approx.:	34 cm

Maximum user weight: 100 kg

125 cm

Article weight (gross, incl. packaging) approx.:	9.81 kg
Article weight (net, without packaging) approx.:	8.21 kg
Packaging dimensions (L x W x H) approx.:	77.5 cm x 42 cm x 18.5 cm
Diameter approx.:	125 cm
Height approx.:	34 cm

Maximum user weight: 100 kg

Handrail

Article weight (gross, incl. packaging) approx.:	2.4 kg
Article weight (net, without packaging) approx.:	2 kg
Packaging dimensions (L x W x H) approx.:	66 cm x 16.5 cm x 6 cm
Set-up dimensions (W x H) approx.:	40 cm x 115 cm

1.2 Personal Safety

DANGER

- + Before you start using the trampoline, you should consult your physician that this type of exercise is suitable for you from a health perspective. Particularly affected are persons who: have a hereditary disposition to high blood pressure or heart disease, are over the age of 45, smoke, have high cholesterol values, are overweight and/or have not exercised regularly in the past year. If you are under medical treatment that affects your heart rate, medical advice is absolutely essential.
- + Note that excessive training can seriously endanger your health. Please also note that heart rate monitoring systems can be inaccurate. If you notice any signs of weakness, nausea, dizziness, pain, shortness of breath, or other abnormal symptoms, stop exercising immediately and seek advice from your doctor if necessary.
- + Do not perform saltos on the trampoline.

WARNING

- + This trampoline may not be used by children under the age of 14.
- + Children should not be allowed unsupervised access to the trampoline.
- + Persons with disabilities must have a medical license and must be under strict observation when using the trampoline.
- + The trampoline is strictly for use by one person at a time.
- + Keep your hands, feet and other body parts, hair, clothing, jewellery and other objects well clear of moving parts as they may get caught in the trampoline.
- + During use, wear suitable sports clothing rather than loose or baggy clothing. When wearing sports shoes, make sure they have suitable soles, preferably made of rubber or other non-slip materials. Shoes with heels, leather soles, studs or spikes are unsuitable. Never exercise barefoot.
- + The trampoline must not be used if the jumping sheet is wet.
- + Do not eat or drink during training.

CAUTION

- + Make sure that nobody is within the range of motion of the trampoline during training so as not to endanger you or other persons.
- + The trampoline may only be used for its intended purpose. Any other use is prohibited and possibly dangerous. The manufacturer and dealer cannot be held responsible for damage caused by improper use.
- + Inspect the trampoline for wear and tear and defective or missing parts before each use.
- + Do not insert any objects of any kind into the openings of the trampoline.

2.2 Set-Up Place



WARNING

- + Do not place the trampoline in main corridors or escape routes.



CAUTION

- + The training room should be well ventilated during training and not be exposed to any draughts.
- + Choose the place in which to set up the trampoline such that there is enough free space/clearance to the front, the rear and to the sides of the trampoline.
- + The set-up and mounting surface of the trampoline should be flat, loadable and solid.
- + Make sure that there is sufficient free space above the trampoline during training.



ATTENTION

- + The device may only be used in one building, in sufficiently tempered and dry rooms (ambient temperatures between 10°C and 35°C). The trampoline should not be used outdoors or in rooms with high humidity (over 70%) like swimming pools.
- + A floor protective mat/equipment underlay can help to protect high-quality floor coverings (parquet, laminate, cork, carpets) from dents and sweat and can help to level out slight unevenness.

2

ASSEMBLY

2.1 General Instructions



DANGER

- + Do not leave any tools, packaging materials such as foils or small parts lying around, as otherwise there is a danger of suffocation for children. Keep children away from the trampoline during assembly.



WARNING

- + Pay attention to the instructions attached to the trampoline in order to reduce the risk of injuries.



CAUTION

- + Ensure to have sufficient room for movement in each direction during assembly.
- + The assembly of the trampoline must be carried out by at least two adults. If in doubt, seek the help of a third technically skilled person.



ATTENTION

- + To prevent damage to the trampoline and the floor, assemble the trampoline on a mat or packaging board.



NOTICE

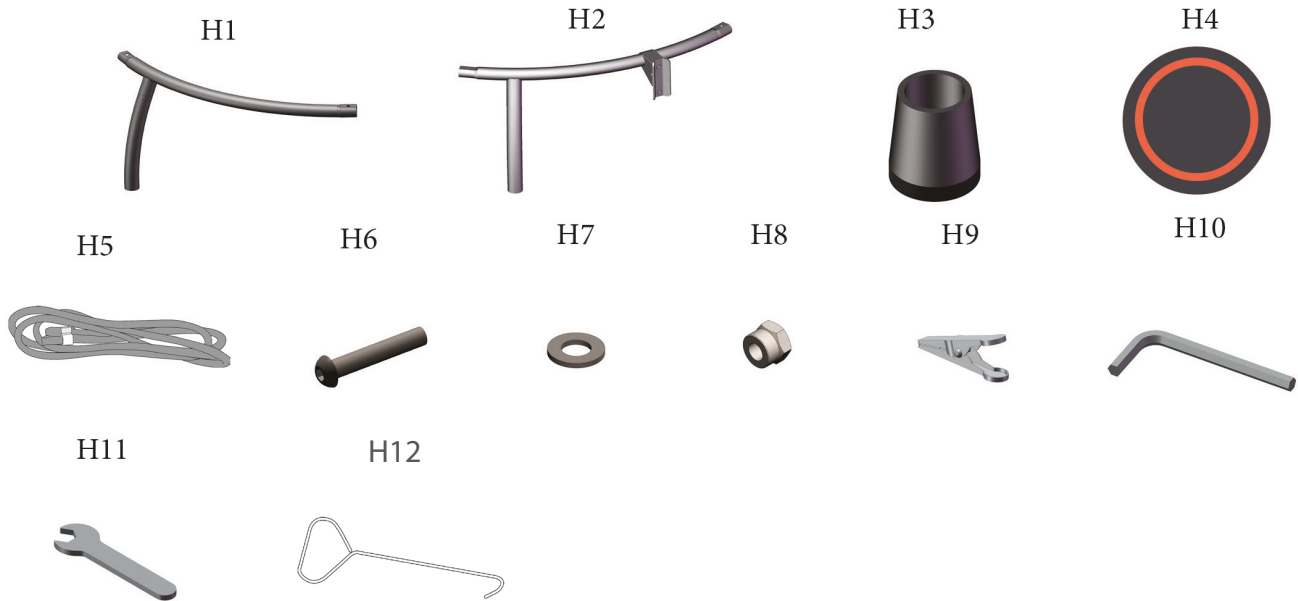
- + In order to make the assembly as simple as possible, some screws and nuts to be used can already be pre-assembled.
- + Ideally, assemble the trampoline at its later set-up place.

2.3 Scope of Delivery - Trampoline

The scope of delivery consist of the following parts. At the beginning, check whether all parts and tools belonging to the device are included in the scope of delivery and whether damage has occurred. In the event of complaints, the contractual partner must be contacted directly.

CAUTION

If parts of the scope of delivery are missing or damaged, the assembly must not be carried out.



No.	Name	Qty.	No.	Name	Qty.
H1	Top Rail	5	H7	6mm Washer	12
H2	Top Rail with handlebar socket	1	H8	M6 Nylon Lock Nut	6
H3	Round Foot Cap	6	H9	Quick Clip	2
H4	Jumping Mat	1	H10	Allen Key	1
H5	Bungee Cord	6	H11	Spanner	1
H6	M6x35 Socket Head Screw	6	H12	Hook	1

2.4 Assembly - Trampoline

Before assembly, take a close look at the individual assembly steps shown and carry out the assembly in the order given.

NOTICE

First loosely screw all parts together and check that they fit properly. Tighten the screws using the tool only when you are instructed to do so.

Step 1: Connecting the Top Rails

1. Connect the top rails (H1) and align the drill holes on the top rails (H1).
2. Fix the top rails (H1) using one socket head screw (H6), one washer (H7) and one nylon lock nut (H8) each, see Fig. 1, Fig. 2 and Fig. 3.
3. Fix the top rail with handlebar socket (H2) to the other top rails (H1) using one washer (H7) and one nylon lock nut (H8), see Fig. 2 and Fig. 3.
4. Tighten the screws and nuts with the tool, see Fig. 3.
5. If not pre-assembled, attach the foot caps (H3) to the legs of the top rails (H1 & H2).



Fig. 1



Fig. 2



Fig. 3

Step 2: Fixing the Jumping Mat

1. Lay out the jumping mat (H4) with the loops facing down.
2. Adjust the plastic holders on the jumping mat so that the holder on the top rail (H2) is between two plastic holders and start on the opposite side of the holder on the top rail, see Fig. 8.
3. Hook one end of the first bungee cord (H5) into the right side of the left plastic holder, see Fig. 8 and Fig. 4.
4. Run the bungee cord (H5) upwards over the top rail and trough the first loop on the right from below.



Fig. 4

NOTICE

For securing during tightening, you can use the hook (H12), see Fig. 5.

5. Proceed the same way for the other loops until you reach the next plastic holder, see Fig. 6.
6. Run the bungee cord (H5) at the last loop from below over the top rail to the plastic holder and hook the bungee cord (H5) into the left side of the plastic holder, see Fig. 7.
7. Run the second bungee cord (H5) on the opposite side from the plastic holder through the loops of the jumping mat (H4) as described in the steps 3–6.
8. Run the next bungee cords (H5) from the plastic holders through the loops of the jumping mat (H4) as described in the steps 3–6.

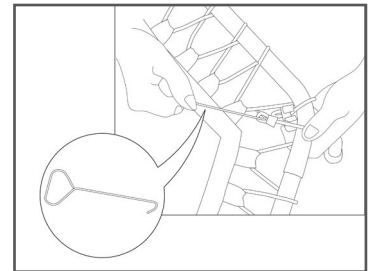


Fig. 5



Fig. 6

ATTENTION

Make sure that the bungee cords (H5) are always installed at the opposite positions, see Fig. 8 and Fig. 9.



Fig. 7



Fig. 8



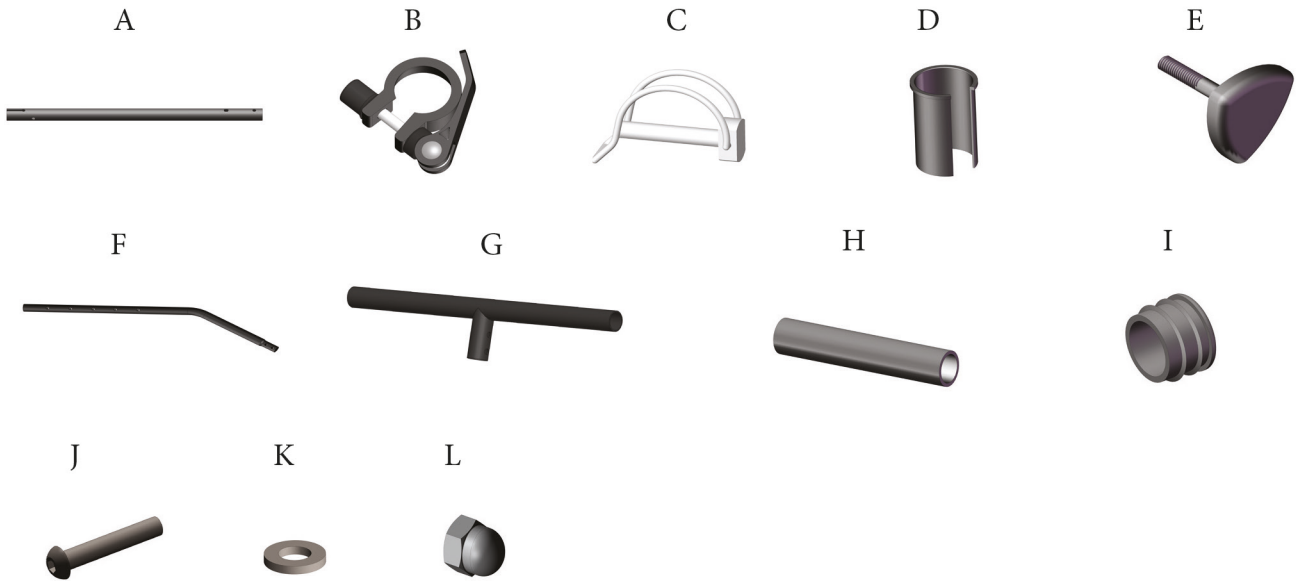
Fig. 9

2.5 Scope of Delivery - Handlebar

The scope of delivery consist of the following parts. At the beginning, check whether all parts and tools belonging to the device are included in the scope of delivery and whether damage has occurred. In the event of complaints, the contractual partner must be contacted directly.

CAUTION

If parts of the scope of delivery are missing or damaged, the assembly must not be carried out.



No.	Name	Qty.	No.	Name	Qty.
A	Handle Bar Support Tube	1	G	Armrest	1
B	Quick Release Clip	1	H	Hand Grip	2
C	D-Spring Clip	1	I	25mm Round End Plug	2
D	Plastic Bushing	1	J	M6x30 Cylinder Head Bolt	2
E	M8x50 Knob	2	K	6mm Washer	4
F	Adjustable Tube	1	L	M6 Safety Nut	2

2.6 Assembly - Handlebar

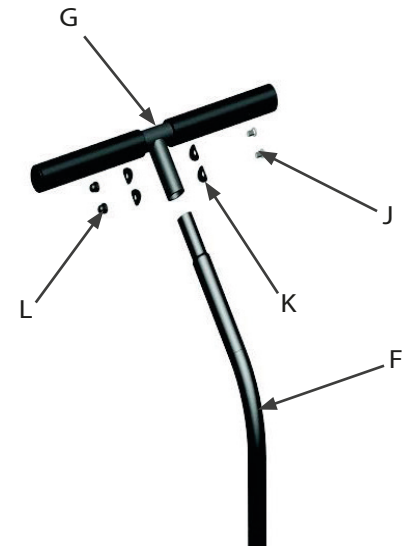
Before assembly, take a close look at the individual assembly steps shown and carry out the assembly in the order given.

① NOTICE

First loosely screw all parts together and check that they fit properly. Tighten the screws using the tool only when you are instructed to do so.

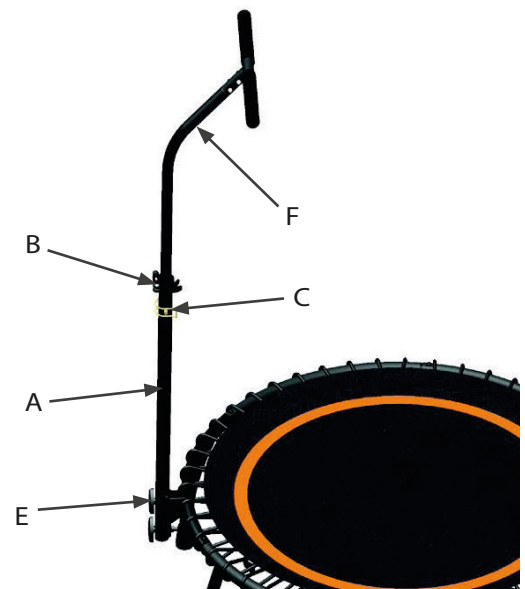
Step 1: Mounting the Armrest

1. Slide the armrest (G) onto the adjustable tube (F).
2. Fix the armrest (G) to the adjustable tube (F) using a total of two cylinder head bolts (J), four washers (K) and two safety nuts (L).
3. Tighten the bolts and nuts.



Step 2: Mounting on the trampoline and connecting the tubes

1. Fix the support tube (A) to the socket on the trampoline using the two knobs (E).
2. Release the quick release clip (B) and slide the quick release clip (B) onto the support tube (A) on the plastic bushing.
3. Slide the adjustable tube (F) into the support tube (A) and set the desired height.
4. To fix the height, open the spring clip (C) and insert the pin of the spring clip (C) into the slot of the support tube (A) and through one of the slots on the adjustable tube (F).
5. Lock the quick release clip (B) and the spring clip (C).



3.1 General Instructions

WARNING

- + The storage location should be chosen so that improper use by third parties or children can be prevented.
- + If your equipment does not have transportation wheels, the equipment must be disassembled before transportation.

ATTENTION

- + Make sure that the equipment is protected from moisture, dust and dirt in the selected storage location. The storage location should be dry and well ventilated and have a constant ambient temperature between 10°C and 35°C.

4.1 General Instructions

WARNING

- + Do not make any improper changes to the equipment.

CAUTION

- + Damaged or worn components may affect your safety and the life of the equipment. Therefore, immediately replace damaged or worn components. In such a case, contact the contract partner. The equipment must not be used until it has been repaired. If necessary, use only original spare parts.

ATTENTION

- + In addition to the instructions and recommendations for maintenance and care given here, additional service and/or repair work may be necessary; this must only be carried out by authorised service technicians.

4.2 Faults and Fault Diagnosis

The equipment undergoes regular quality controls during production. Nevertheless, faults or malfunctions may occur. Frequently, individual parts are responsible for these disturbances, an exchange is usually sufficient. Please refer to the following overview for the most common errors and how to correct them. If the equipment still does not function properly, contact your contract partner.

Fault	Cause	Solution
Uneven tension of the jumping mat	<ul style="list-style-type: none"> + Worn out bungee cords + Loosened bungee cords 	<ul style="list-style-type: none"> + Replace the bungee cords + Check the bungee cords on the plastic holders
Handlebar/Top rail wobbles or creaks	Loosened screw connections	Check the tightness of the screws and re-tighten them if necessary

4.3 Maintenance and Inspection Calendar

To avoid damage from body sweat, the equipment must be cleaned with a damp towel (no solvents!) after each training session.

The following routine tasks must be performed at the specified intervals:

Part	Weekly	Monthly	Quarterly
Jumping mat and bungee cords		I/R	
Top rail		I	R
Screw connections		I	
Connectors		I	
Legend: C = clean; I = inspect			

5 DISPOSAL

At the end of its operational life, this equipment cannot be disposed of in normal household waste. Instead, it must be disposed of via a recycling centre. Further information can be obtained from your local authority's recycling service.



The materials can be recycled as per their symbols. Through the reuse, recycling of materials or other forms of recovery of old equipment, you make an important contribution to the protection of the environment.

6 RECOMMENDED ACCESSORIES

To make your training experience even more efficient and pleasant, we recommend that you add suiting accessories to your fitness equipment. This could be a floor mat, for example, which makes your fitness equipment stand more securely and also protects the floor from falling sweat, but it could also be additional handrails on some treadmills or silicone spray to keep moving parts in good shape.

If you have purchased a fitness machine with pulse training and want to train your heart rate, we strongly recommend that you use a compatible chest strap, as this ensures optimum transmission of the heart rate. You may want to buy additional grips or weights for multi gyms.

Our range of accessories offers the highest quality and makes training even better. If you would like to find out more about compatible accessories, please go to the detail page of the product in our webshop (the easiest way is to enter the article number in the search field above) and go to the recommended accessories on this page. Of course, you can also contact our customer service: by telephone, e-mail, in one of our branches or via our social media channels. We will be happy to advise you!



floor mat



chest strap



chest strap contact gel



silicone spray



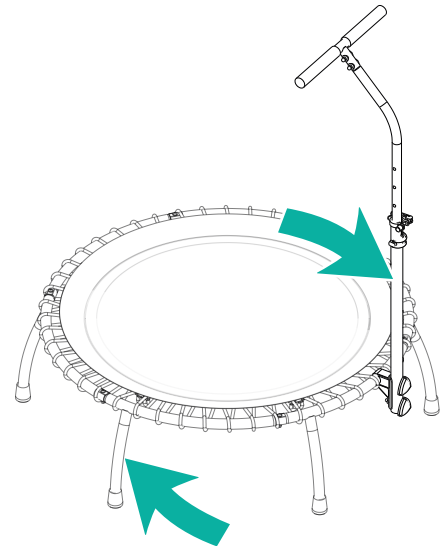
towels

7.1 Serial Number and Model Name

In order to provide you with the best possible service, please have the model name, article number, serial number, exploded drawing and parts list ready. The corresponding contact options can be found in chapter 9 of this operating manual.

NOTICE

The serial number of your equipment is unique. It's located on a white sticker. The exact position of this sticker is shown in the following illustration.



Enter the serial number in the appropriate field.

Serial number:

Brand / Category:

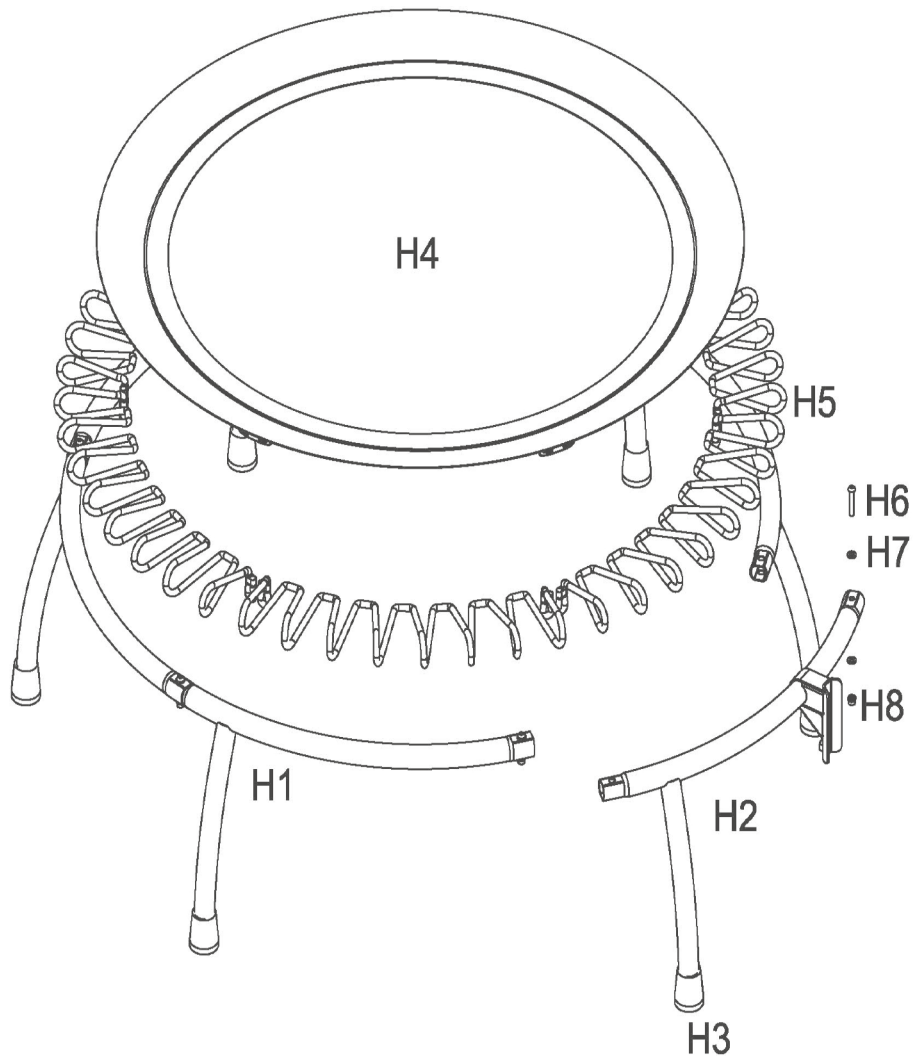
Model Name:

Article Number:

7.2 Parts List - Trampoline

No.	Name	Qty.	No.	Name	Qty.
H1	Top rail	5	H7	6mm Washer	12
H2	Top rail with handle bar socket	1	H8	M6 Nylon Lock Nut	6
H3	Round foot cap	6	H9	Quick Clip	2
H4	Jumping mat	1	H10	Allen key	1
H5	Bungee cord	6	H11	Spanner	1
H6	M6x35 Socket head screw	6			

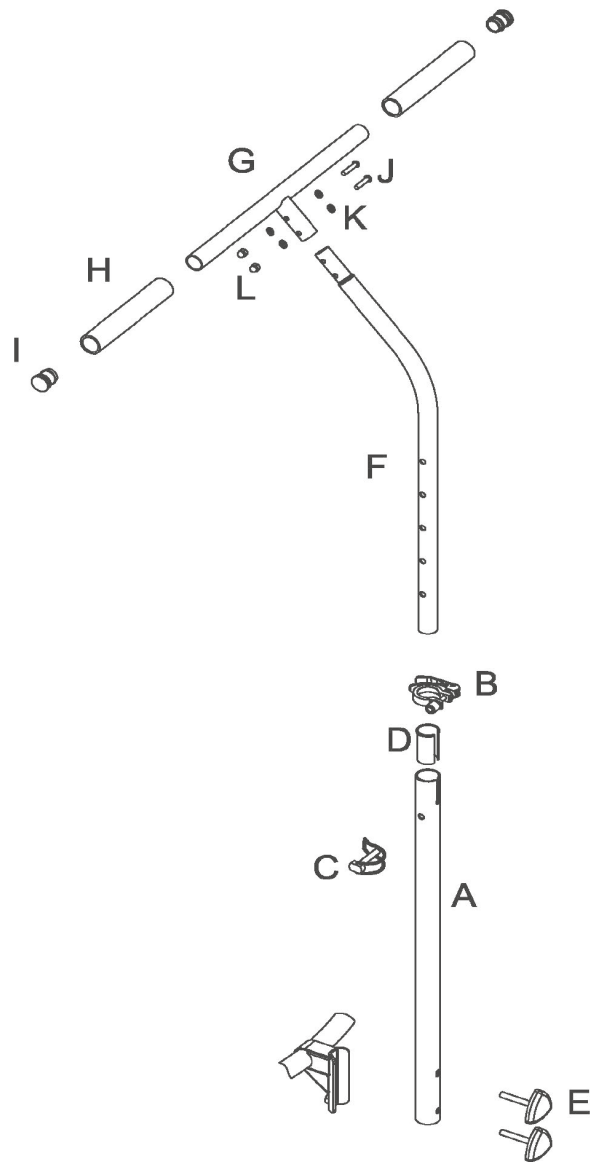
7.3 Exploded Drawing - Trampoline



7.5 Parts List - Handlebar

No.	Name	Qty.	No.	Name	Qty.
A	Handle bar support tube	1	G	Armrest	1
B	Quick release clip	1	H	Hand grip	2
C	D-Spring Clip	1	I	25mm Round End Plug	2
D	Plastic Bushing	1	J	M6X30 Cylinder head bolt	2
E	M8X50 Knob	2	K	6mm Washer	4
F	Adjustable tube	1	L	M6 Safety nut	2

7.4 Exploded Drawing - Handlebar



Training equipment from Taurus® is subject to strict quality control. However, if a fitness equipment purchased from us does not work perfectly, we take it very seriously and ask you to contact our customer service as indicated. We are happy to help you by phone via our service hotline.

Error Descriptions

Your fitness equipment is developed for long-term, high-quality training. However, should a problem arise, please first read the operating instructions. For further assistance, please contact your contract partner or call our service hotline. To ensure your problem is solved as quickly as possible, please describe the defect as exactly as possible.

In addition to the statutory warranty, we provide a warranty for every fitness equipment purchased from us according to the following provisions.

Your statutory rights are not affected.

Warranty

The warranty is the first/original buyer and/or any person who received a newly purchased product as a gift from the original buyer.

Warranty period

The warranty periods, shown on our web shop, begin on delivery of the fitness equipment. The respective warranty periods for your equipment can be found on its product website.

Repair Costs

According to our choice, there will either be a repair, a replacement of individual damaged parts or a complete replacement. Spare parts, that have to be mounted while assembling the equipment, have to be replaced by the warranty personally and are not a part of repair. After the expiration of the warranty period for repair costs, a pure parts warranty applies, which does not include the repair, installation and delivery costs.

The terms of use are defined as follows:

- + Home use: solely for private use in private households up to 3 hours per day
- + Semi-professional use: up to 6 hours per day (e. g. rehabilitation centres, hotels, clubs, company gyms)
- + Professional use: more than 6 hours per day (e. g. commercial gyms)

Warranty Service

Within the warranty period, equipment which develops faults as a result of material or manufacturing defects, will be repaired or replaced at our discretion. Ownership of equipment or parts of equipment which have been replaced is transferred to us. The warranty period is not extended nor does a new warranty period begin following repair or replacement under the warranty.

Warranty Conditions

For the warranty to be valid, the following steps must be taken:

Please contact our customer service by email or phone. If the product under warranty has to be sent in for repair, the seller bears costs. After expiry of the warranty, the buyer bears the costs of transport and insurance. If the fault is covered by our warranty, you will receive a new or repaired equipment in return.

Warranty claims are invalid in case of damage resulting from:

- + misuse or improper handling
- + environmental influences (moisture, heat, electrical surge, dust, etc.)
- + failure to follow the current safety measures for the equipment
- + failure to follow the operating instructions
- + use of force (e. g. hitting, kicking, falling)
- + interventions which were not carried out by one of our authorized service centres
- + unauthorised repair attempts

Proof of Purchase and Serial Number

Please make sure that you are able to provide the appropriate receipt when claiming on your warranty. So that we can clearly identify the model of your equipment, and for the purposes of our quality control, you will need to give the serial number of your equipment, when contacting the service team. Where possible please have your serial number and your customer number ready when you call our service hotline. It will help us to deal with your request swiftly.

If you cannot find the serial number on your fitness equipment, our service team is at your disposal to offer further information.

Service outside of the Warranty Period

We are also happy to issue an individual cost estimate if there is a problem with your fitness equipment after the warranty has expired, or in cases which do not fall under the terms of the warranty, e. g. normal wear and tear. Please contact our customer service team to find a quick and cost-effective solution to your problem. In such a case you will be responsible for the delivery costs.

Communication

Many problems can be solved just by speaking to us as your specialist supplier. We know how important it is to you as a user of the fitness equipment to have problems solved quickly and simply, so you can enjoy working out with minimal interruption. For that reason, we also want to resolve your queries quickly and in a straightforward manner. Thus, please always keep your customer number and the serial number of the faulty equipment handy.

DE	DK	FR
<p>TECHNICAL SUPPORT</p> <p>☎ +49 4621 4210-900 📠 +49 4621 4210-698 ✉ technik@sport-tiedje.de</p> <p>🕒 Mo - Fr 08:00 - 18:00 Sa 09:00 - 18:00</p> <p>SERVICE</p> <p>☎ 0800 20 20277 (Freecall) ✉ info@sport-tiedje.de</p> <p>🕒 Mo - Fr 08:00 - 21:00 Sa 09:00 - 21:00 So 10:00 - 18:00</p>	<p>TECHNICAL SUPPORT & SERVICE</p> <p>☎ 80 90 16 50 +49 4621 4210-945 ✉ info@fitshop.dk</p> <p>🕒 Mo - Fr 08:00 - 18:00 Sa 09:00 - 18:00</p>	<p>TECHNICAL SUPPORT & SERVICE</p> <p>☎ +33 (0) 172 770033 +49 4621 4210-933 ✉ service-france@fitshop.fr</p> <p>🕒 Mo - Fr 08:00 - 18:00 Sa 09:00 - 18:00</p>
	PL	BE
	<p>TECHNICAL SUPPORT & SERVICE</p> <p>☎ 22 307 43 21 +49 4621 42 10-948 ✉ info@fitshop.pl</p> <p>🕒 Mo - Fr 08:00 - 18:00 Sa 09:00 - 18:00</p>	<p>TECHNICAL SUPPORT & SERVICE</p> <p>☎ 02 732 46 77 +49 4621 42 10-932 ✉ info@fitshop.be</p> <p>🕒 Mo - Fr 08:00 - 18:00 Sa 09:00 - 18:00</p>

UK	NL	INT
<p>TECHNICAL SUPPORT</p> <p>☎ +44 141 876 3986 ✉ support@powerhousefitness.co.uk</p> <p>SERVICE</p> <p>☎ +44 141 876 3972 🕒 Mo - Fr 9am - 5pm</p>	<p>TECHNICAL SUPPORT & SERVICE</p> <p>☎ +31 172 619961 ✉ info@fitshop.nl</p> <p>🕒 Ma - Do 09:00 - 17:00 Vr 09:00 - 21:00 Za 10:00 - 17:00</p>	<p>TECHNICAL SUPPORT & SERVICE</p> <p>☎ +49 4621 4210-944 ✉ service-int@sport-tiedje.de</p> <p>🕒 Mo - Fr 8am - 6pm Sat 9am - 6pm</p>
	AT	CH
	<p>TECHNICAL SUPPORT & SERVICE</p> <p>☎ 0800 20 20277 (Freecall) +49 4621 42 10-0 ✉ info@sport-tiedje.at</p> <p>🕒 Mo - Fr 08:00 - 18:00 Sa 09:00 - 18:00</p>	<p>TECHNICAL SUPPORT & SERVICE</p> <p>☎ 0800 202 027 +49 4621 42 10-0 ✉ info@sport-tiedje.ch</p> <p>🕒 Mo - Fr 08:00 - 18:00 Sa 09:00 - 18:00</p>

Please find a detailed overview including address and opening hours for all stores of the Sport-Tiedje Group in Germany and abroad on the following website:

www.sport-tiedje.com/en/stores

WE LIVE FITNESS

WEBSHOP AND SOCIAL MEDIA

Sport-Tiedje is Europe's largest specialist store for home fitness equipment with currently over 70 stores and one of the world's most renowned online mail order companies for fitness equipment. Private customers order via the 25 web shops in the respective national language or have their desired equipment assembled on site. In addition, the company supplies fitness studios, hotels, sports clubs, companies and physio practices with professional equipment for endurance and strength training.

Sport-Tiedje offers a wide range of fitness equipment from renowned manufacturers, high-quality in-house developments and comprehensive services, such as a build-up service and sports scientific advice before and after the purchase. The company employs numerous sports scientists, fitness trainers and competitive athletes.

Visit us also on our social media platforms or our blog!

