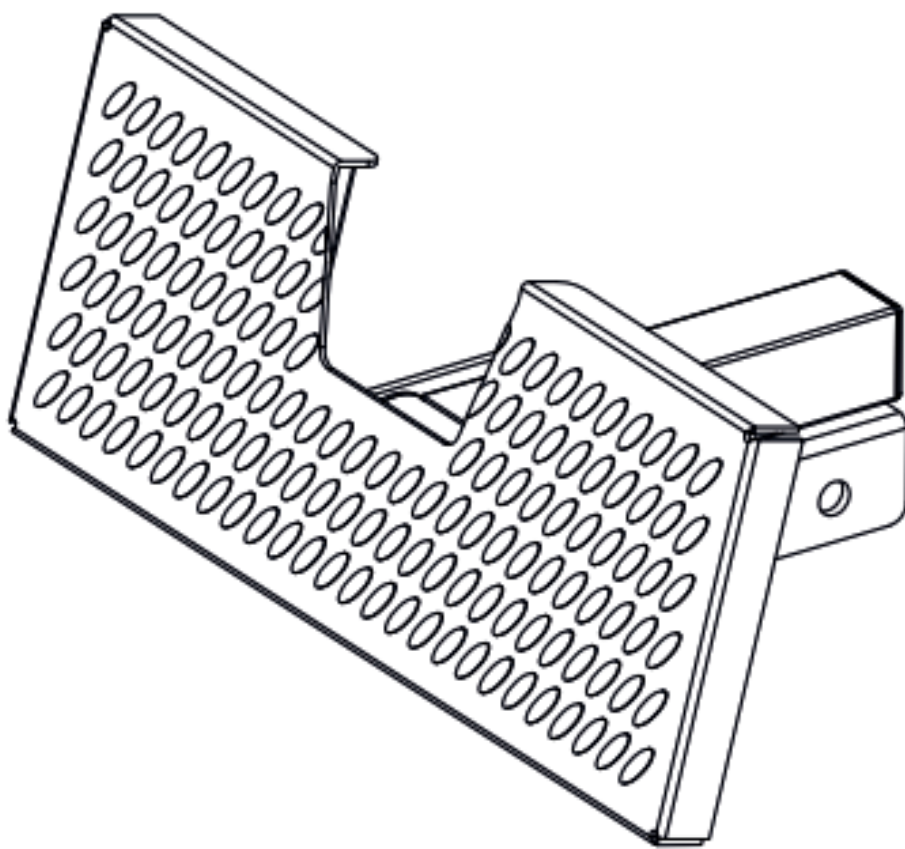


FORCE USA



USER MANUAL | **F-LOWROW-FP**





THANK YOU FOR YOUR PURCHASE

**For the most up to date info about using
your equipment and our latest support
videos, please visit:**

www.forceusa.com



BEFORE YOU START



Read all instructions in this manual before assembling or using this equipment



Only tighten nuts and bolts loosely until all equipment is assembled. Once the equipment is fully assembled, tighten from the bottom up, working evenly around the unit.

- Remove all parts from the packaging and count each component separately to ensure everything is provided correctly, noting that some items may be pre-assembled
- Follow the instructions and refer to both the individual assembly pages and the exploded views of the equipment whenever possible
- The owner is responsible for ensuring that all users of this unit have read the user manual and understand the safety precautions
- Descriptions of left and right refer to the perspective of standing in front, facing the equipment.
- Place all parts in a cleared area and remove the packing materials. Do not dispose of the packing materials until all assembly steps are completed
- It is recommended to keep these instructions

Although current at the time of this printing, specifications for this model may have changed in our continuing effort for improvement. Force USA reserves the right to modify and improve the specifications of its products without prior notice.

BEFORE YOU START CONTINUED

SAFETY PRECAUTIONS

Every piece of Force USA equipment is built for maximum safety and meets or exceeds all applicable domestic and international standards. However, certain precautions must be taken when operating any piece of fitness equipment.

- It is highly recommended that two or more people are used for assembly
- Assemble equipment on a flat surface
- Consider placing a mat/mats under the equipment to protect your floor
- Ensure all parts are in working order prior to use
- Make sure all pivoting components are able to move freely
- Do not use or store the equipment outdoors or around water
- Do not over tighten any component with pivoting function
- Keep hair, fingers and clothing away from moving parts
- Only use attachments recommended by the manufacturer
- Never operate if parts are not functioning correctly
- Always stretch prior to using equipment
- Stop immediately if you experience any pain, dizziness or nausea
- Before starting any exercise program consult your doctor

PREVENTATIVE MAINTENANCE

To ensure your equipment is operating at its peak, please follow the below preventative maintenance schedule performing all tasks upon initial assembly:

Daily Maintenance

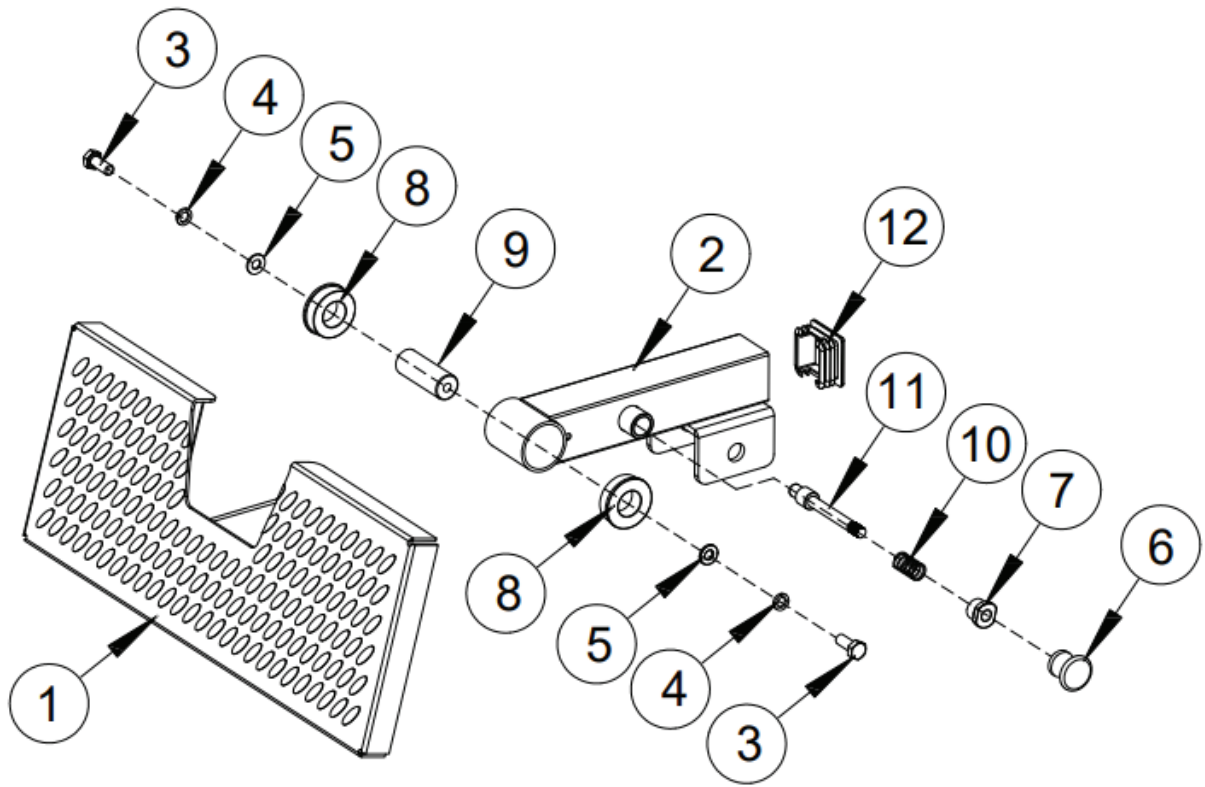
- Wipe down the equipment to remove any dust and sweat residue with a dry, non-abrasive cloth
- Inspect the unit for noisy, damaged or loose components

Monthly Maintenance

- Thoroughly clean the equipment using a non abrasive cloth dampened with a mild, all purpose cleaner ensuring to thoroughly wipe down and dry the equipment afterwards
- Apply a 100% silicone lubrication (preferably spray) to guide rods, pulley sliders, weight plate carriages and any other moving parts where friction can occur including bearings (where applicable). Any other form of lubrication will void your warranty
- Check the tightness of all bolts, nuts and screws
- Check the cables for fraying or any signs of wear and ensure they are at the correct tension with a small amount of slack at resting position (where applicable)
- Inspect pulleys for any damage or cracks (where applicable)
- Knurling can be cleaned using a soft bristled brush to help remove any particles that may be nestled within the knurling
- Vacuum around the machine/equipment to prevent dust acclumulation

EXPLODED DIAGRAMS

The upcoming pages feature an exploded view drawing of your product. These diagrams visually represents each component as it relates to the whole, although additional assembly by you is not required. It serves to help you identify and understand every part included in your purchase. While this guide offers a clear insight into how these parts fit together, it is particularly useful for troubleshooting and maintaining your product. Beyond practical benefits, the exploded view also aims to enhance your understanding of the product's design and functionality. As you explore these pages, you'll find they make it easier to discuss any component with our customer support, should the need arise. We hope this detailed visual approach not only informs but also enriches your experience with your new purchase.



COMPLETE COMPONENT INVENTORY

Key No.	Description	Note	Quantity
1	Foot Plate Frame Connection		1
2	Foot Plate Connect Frame Connection		1
3	Outer Hex Head Screw	M10*25	2
4	Spring Washer	Φ10	2
5	Flat Washer	Φ10.2*Φ20*2	2
6	Pin		1
7	Latch Tube Closing Nut		1
8	Alloy Sleeve		2
9	Rotating Shaft		1
10	Compressing Spring	Φ1.4*Φ14.5*70	1
11	Latch		1
12	End Cap		1

WARRANTY INFO

For warranty information please contact the dealer nearest to you.



<https://www.forceusa.com/locator>

FORCE USA

forceusa.com